

INDUSTRIAL

Porcelain | Rectified



100%
UV stable



Fire
Resistant



Scratch
Resistant



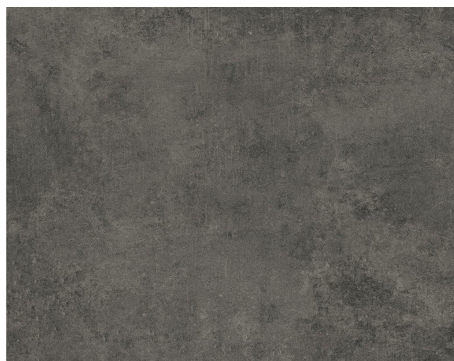
Frost
Resistant



Water
Resistant

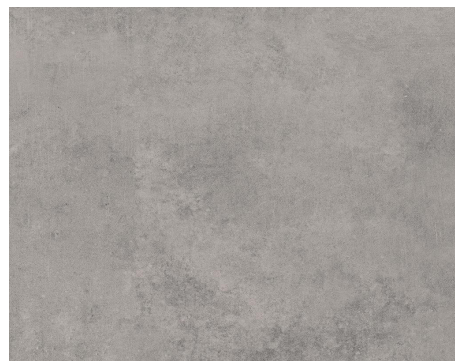


Bacteria
Resistant



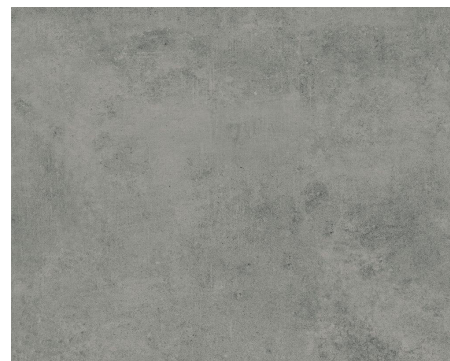
ASHPALT

Matt 30x30 | 30x60 | 60x60



CEMENT

Matt 30x30 | 30x60 | 60x60



CONCRETE

Matt 30x30 | 30x60 | 60x60