

ONDA

Porcelain | Rectified



100%
UV stable



Fire
Resistant



Scratch
Resistant



Frost
Resistant



Water
Resistant



Bacteria
Resistant

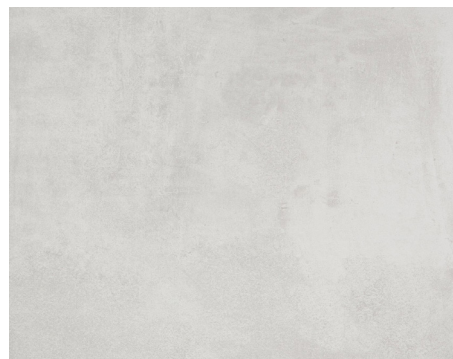


Anti-Slip



ANTHRACITE

Matt 7.5x30 | 30x30 | 30x60 | 60x60 | 80x80
Anti-slip 30x60 | 60x60



BIANCO

Matt 7.5x30 | 30x30 | 30x60 | 60x60
Anti-slip 30x60



CENERE

Matt 7.5x30 | 30x30 | 30x60 | 60x60 | 80x80
60x120
Anti-slip 30x60 | 60x60



GRIGIO

Matt 7.5x30 | 30x30 | 30x60 | 60x60 | 80x80
60x120
Anti-slip 30x60 | 60x60

30x60 | 60x60 | 1046x1763 | 3654x829